



SpinFire 8.4 Build 1337 Release Notes

September 14, 2009


Languages Released: English, French, German, Italian, Japanese, Korean, Simplified Chinese, Traditional Chinese

General

SpinFire 8.4 introduces a new architecture that features a single executable that allows users to change the level of functionality by the use of a simple license key. SpinFire 8.4 combines the functionality of SpinFire Reader, SpinFire for Office and SpinFire Professional into one uniform user interface.

Additionally SpinFire 8.4 introduces SpinFire Markup and SpinFire Lite, two new product levels that fall between the free SpinFire Reader and the fully functional SpinFire Professional.

The following table summarizes the functionality of the different SpinFire product levels.

|  | SpinFire 8.4 | | | |
|-----------------------------------------------------------------------------------|--------------|---------|------|--------------|
| | Reader | Markup | Lite | Professional |
| Opens Native CAD Files | | | | X |
| Opens .3D Files | X | X | X | X |
| Save | | X | X | X |
| Export | | | | X |
| Snapshot | | | X | X |
| X-Section | | | X | X |
| Transformations | | | X | X |
| Measurements | Base | Limited | Full | Full |
| Markups | | X | X | X |
| Display Notes | X | X | X | X |
| Plug-ins | | | | X |

In addition to the two new product levels, the application can be run in three different platforms, desktop, Microsoft Office and IE Browser. Previously the different platforms were supported by specific products. Now users can run any of the four product levels in the different platforms without any special license.

Existing SpinFire for Office customers will receive a replacement license of SpinFire Markup.

Two key features for existing customers are the following.

- SpinFire Professional users now have complete Office integration.
- SpinFire Reader users now have access to a UI in any of the supported languages.

License Upgrade

Upgrading SpinFire Professional

For existing customers with previous versions of Professional, the user just needs to

- run the SpinFire 8.4 installation, and

- upgrade his license to 8.4

The installation will replace any previously installed versions.

If the user had importers and/or plug-ins previously installed, they will be able to continue running them without reinstalling or configuring them.

In order to upgrade a license to 8.4, the user simply needs to go to the Customer page on the Actify corporate website where they fill out a form and upgrade their licenses. After filling out the form, they will receive an e-mail that will include the license file. In Addition once the on-line upgrade is complete, the user could activate using the license file or on-line.

Upgrading SpinFire Reader

For existing customers with previous versions of SpinFire Reader, the user runs the SpinFire 8.4 installation which replaces any previously installed versions.

Once installed, the user will need to generate a permanent SpinFire Reader license from the Actify corporate site by filling out a form. After the form has been submitted, they will receive an e-mail that will include the license file and seatID. The user could activate using the license file or on-line.

SpinFire Reader requires a license. It is still a free product, but will not run without a valid license. It does not work like older versions of SpinFire Reader.

Upgrading SpinFire for Office

For existing SpinFire for Office users, they will need to uninstall SpinFire for Office before running the SpinFire 8.4 installation. Once uninstalled just run the installation for SpinFire 8.4.

If the user tries to install SpinFire 8.4 without uninstalling SpinFire for Office, the 8.4 install will terminate informing the user to uninstall SpinFire for Office.

Current users that have not been contacted by their resellers must contact their reseller to request an upgraded license.

New Users

Users can request Trials of SpinFire from the website by filling out a registration form. After the form has been submitted, they will receive an e-mail that will include a temporary seatID and license file along with instructions on how to activate the product. The same process is taken for requesting a SpinFire Reader license.

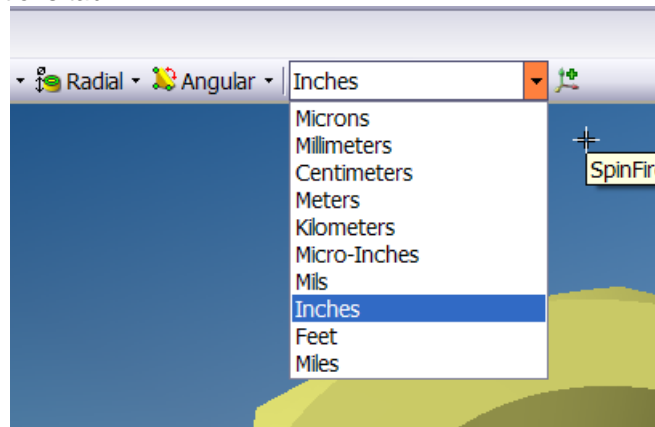
Please note:

All .3D files created by older versions of SpinFire Professional will work with SpinFire 8.4. However, there is full backwards compatibility only with SpinFire Pro 8.3.

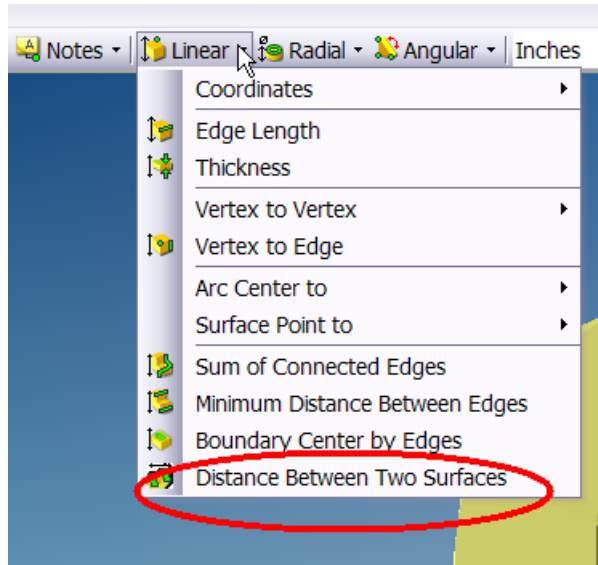
Bugs Fixed

- 4575 Section length was incorrect for some files. A conversion was being improperly applied.
- 6565 SpinFire 8.4 implemented a new license model. Details of this are covered above.
- 6566 SpinFire 8.4 introduces a single installable image for Desktop, Browser and Office environment. Details of this are covered above.
- 6819 The About dialog was updated to reflect the new version.
- 6820 SpinFire 8.4 uses a different sfimporters.xml file, so importer versions can be updated separately for each version.

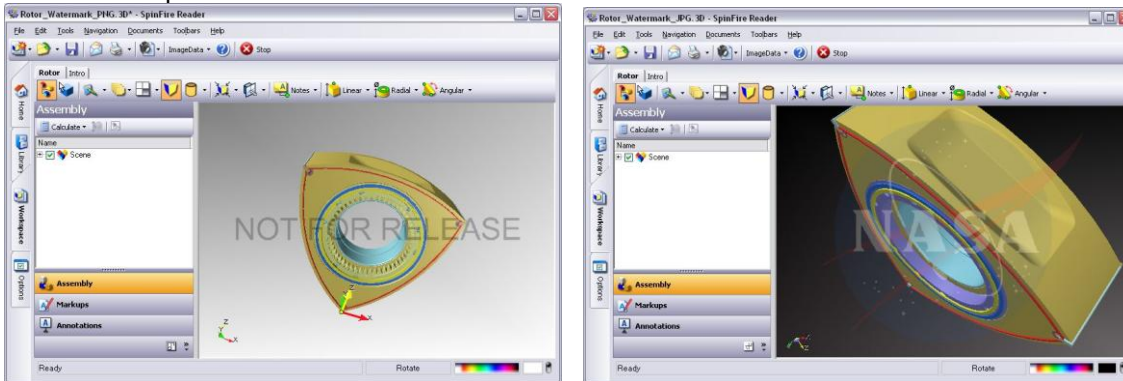
- 6822 SpinFire in the Office mode no longer requires a specific license. This has been replaced with the new single install and licensing.
- 6838 Office platform crashes in Word if you exit without saving. It was determined that this problem only occurred on a few machines that had previous beta versions of 8.4.
- 6849 The license agreement page was upgraded to reflect 8.4.
- 6873 In an early 8.4 beta version view titles were missing. This was resolved.
- 6876 In an early 8.4 beta version the grid and cursor coordinates text was missing in 2D views. This was resolved.
- 6909 SpinFire 8.4 will not install on Publisher 3.2. A version of Publisher will be released to resolve this problem.
- 6911 With the introduction of the four product levels, the help file was updated to remove the reference to SpinFire Professional. It now only references it as SpinFire.
- 6916 A unit dropdown was added to 3D toolbar. Users can now change units without having to go to the Options tab.



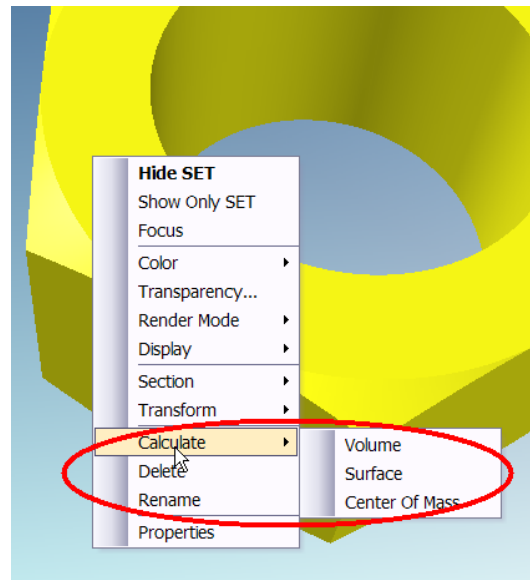
- 6923 The install was updated to not create a link to the SpinFire in IE browser. Now that SpinFire Reader is supported in the desktop, MSOffice and IE browser, the default for SpinFire Reader is the desktop.
- 6924 During an uninstall not all files were removed.
- 6948 Extended ASCII characters are now displayed correctly in menu options on German Desktop
- 6959 The Register by Mail links now show the current address for Actify.
- 6964 The Print Region... has been enhanced to allow user to define his own aspect ratio.
- 6983 License agreement for the foreign languages was translated to all languages.
- 6987 Help file for French was changed from referencing SpinFire Professional 8.2 to SpinFire 8.4.
- 6989 In an early beta release of SpinFire 8.4, the embedded object did not fit to size in PowerPoint. That has been resolved.
- 7006 The 2D Linear measurement were not correctly licensed for Reader, Markup and Lite licenses in the beta releases.
- 7019 In an early beta release of SpinFire 8.4, the section plane was turned off when Selecting the Place By menu option. That has been resolved.
- 7021 The Traditional Chinese license agreement are has been updated to correct many translation errors.
- 7023 The product name has been changed from SpinFire Professional to SpinFire in license agreements for foreign languages
- 7024 The product name has been changed from SpinFire Professional to SpinFire in the installation dialog for all languages.
- 7028 When SpinFire 8.4 is installed on a machine that has an SFO install, the SFO will be removed.
- 7041 The Update license error message is now translated to all languages.
- 7093 Linear measurements has been enhanced to let users measure the distance between two flat and parallel surfaces.



7106 SpinFire has been enhanced to allow a watermark to be added to the 3D display. The watermark supports two file types, jpg (alpha is determined by source image - light is opaque -> dark is transparent) and 32-bit png (alpha is read from the png's alpha channel). To add a watermark to a file add a file named watermark.jpg/png to the .3D file. The watermark is scaled to fit the current size of the viewport and is displayed at a default 25% opacity. The watermark will appear in printing and snapshots. Here a couple of examples.



7108 The RMB options on 3D entities and assembly tree nodes has been enhanced to include Calculate options of volume, surface area and center of mass markup.



- 7111 The Markup tree was enhanced to support multiple selection. The multi selection works exactly like is does with the Assembly tree. Selection plus a <Shift>+Selection selects a range of items. <Ctrl>+Selection will select or deselect individual items.
- 7112 The transforms panel was updated to allow the transform to be applied more than once without having to make a change to the values.
- 7163 Translation for Distance Between Two Surfaces is correct for both Chinese
- 7164 Distance Between Two Surfaces function works on Italian 8.4. In beta releases it was broken.
- 7167 Korean license agreement is now correct
- 7168 SfoAddinRes.dll cannot be loaded when starting Word 2003
- 7170 The new Distance Between Two Surfaces linear measurement is not available in Korean

Notes:

The following items were not resolved in time for the release.

- 6855 When inserting a document into an Office document changes to the 3D data are not save unless the SAVE icon is selected.
- 7146 The SpinFire process now terminates after exiting Excel if any plug-ins are installed and active. Eventhough the SpinFire process closes all of the time, on certain systems the Excel process does not close. As a work around, use Task Manager to kill the process manually.
- 7159 Characters in traditional and simplified Chinese Help files have been corrected in the menu section
- 7165 The SpinFire in Office Environment in the help file is included in English for all languages.
- 7206 On some systems, when starting SF from an Office document, it might crash the first time it is used after the install. Restarting SF will work on all remaining instances. It is only the first time after the initial install that has the problem.
- 7216 If a user has a previous version of SF 8.4, they need to uninstall it before installing the production release. During the uninstall all plug-ins installed with the previous version of SF are not recognized by the production install. To fix the problem go to the ADD OR REMOVE PROGRAMS and for each of the installed plug-ins select "Click here for support information.". In the panel that appears, select REPAIR. This will fix the install for that plug-in. Upgrading from 8.3 does not cause this problem.